



Cathedral City

Redistricting 2021  
Fourth Public Hearing  
February 23, 2022



[www.bbklaw.com](http://www.bbklaw.com)  
© 2021 BEST BEST & KRIEGER LLP

# TIMELINE

December 8, 2021	1 <sup>st</sup> public hearing Held prior to the release of draft maps
Winter 2021/22	BB&K to prepare draft maps using 2020 census data
January 19, 2022	Publish draft map(s)
January 26, 2022	2 <sup>nd</sup> public hearing Consideration and input on proposed draft maps
February 10, 2022	3 <sup>rd</sup> public hearing - Workshop Consideration and input on proposed draft maps
February 23, 2022	4 <sup>th</sup> public hearing Council to introduce ordinance approving final maps.
April 17, 2022	City deadline to adopt ordinance after 2 <sup>nd</sup> reading (effective immediately) and to <b>submit map to Registrar.</b>
November 2022	2022 election



# Redistricting Rules and Goals

## Federal Law

Equal Population  
Federal Voting Rights Act  
No Racial Gerrymandering



## California Criteria for Cities

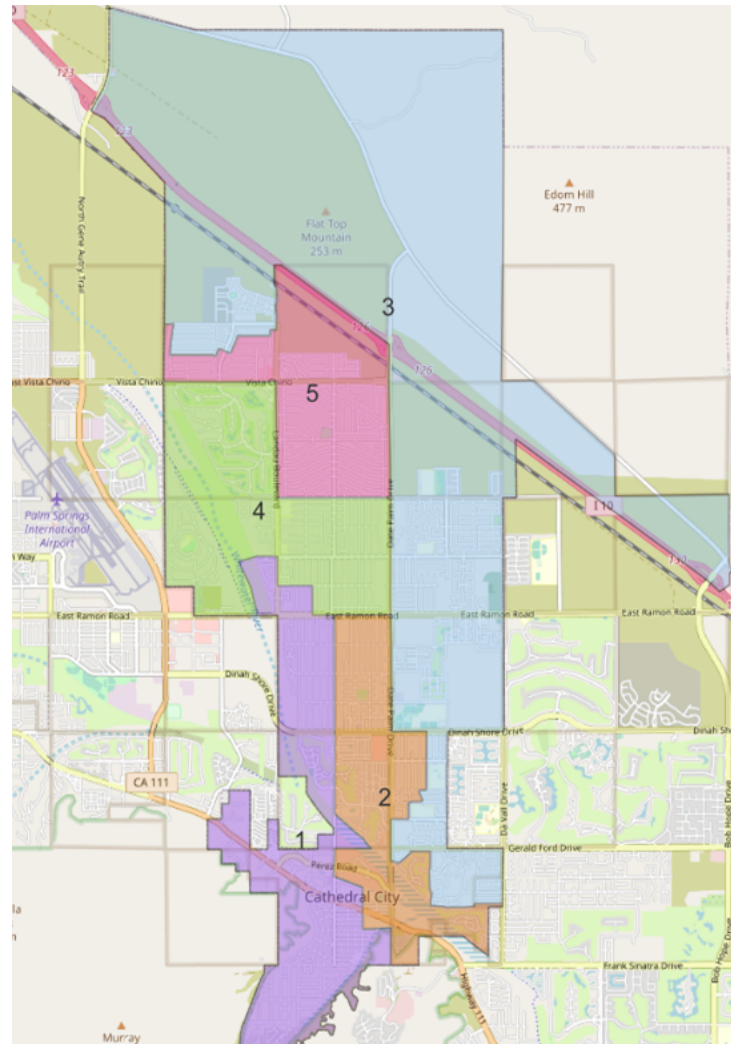
Geographically contiguous  
Geographic integrity of a local neighborhood, communities of interest  
Easily identifiable and understandable – use of local landmarks/boundary lines  
Geographically compact

## Other traditional principles

Minimize voters shifted to different election years  
Respect voters' choices / continuity in office  
Future population growth  
Preserving the core of existing districts



# Existing Districts



Housing Stats



[www.bbklaw.com](http://www.bbklaw.com)

© 2021 BEST BEST & KRIEGER LLP

# Existing Districts with 2020 Census Data Overlay

District	Total POP	Raw Dev.	% Dev.	Latino	CVAP 19 Total	CVAP 19 NL White	CVAP 19 NL Black	CVAP 19 NL Hispanic	CVAP 19 Not Hispanic	CVAP 19 NL AIAN	CVAP 19 NL ASIAN	CVAP 19 NL Hawaiian	CVAP 19 NL Other
1	10,223	-113.6	1.10%	6,754	6,135	2,545	157	3,205	2,912	-	114	-	48
2	10,428	91.4	0.88%	6,943	5,844	2,870	109	2,514	3,347	24	310	2	11
3	10,972	635.4	6.15%	5,183	7,338	4,023	298	2,250	5,047	104	462	13	7
4	9,914	-422.6	4.09%	6,461	6,393	2,032	266	3,406	2,984	-	564	21	78
5	10,146	-190.6	1.84%	5,659	7,506	3,302	190	3,118	4,404	95	652	29	20

Total Population: 51,683  
 Ideal District Population: 10,337  
 Total Deviation: **10.24%**



# Findings

- Total Deviation is just above the “acceptable” range at 10.24%
- Two of the five districts are already majority/minority population.
  - Districts 1 & 4 are majority/minority Hispanic
- Current district boundaries **must** be adjusted for population balance

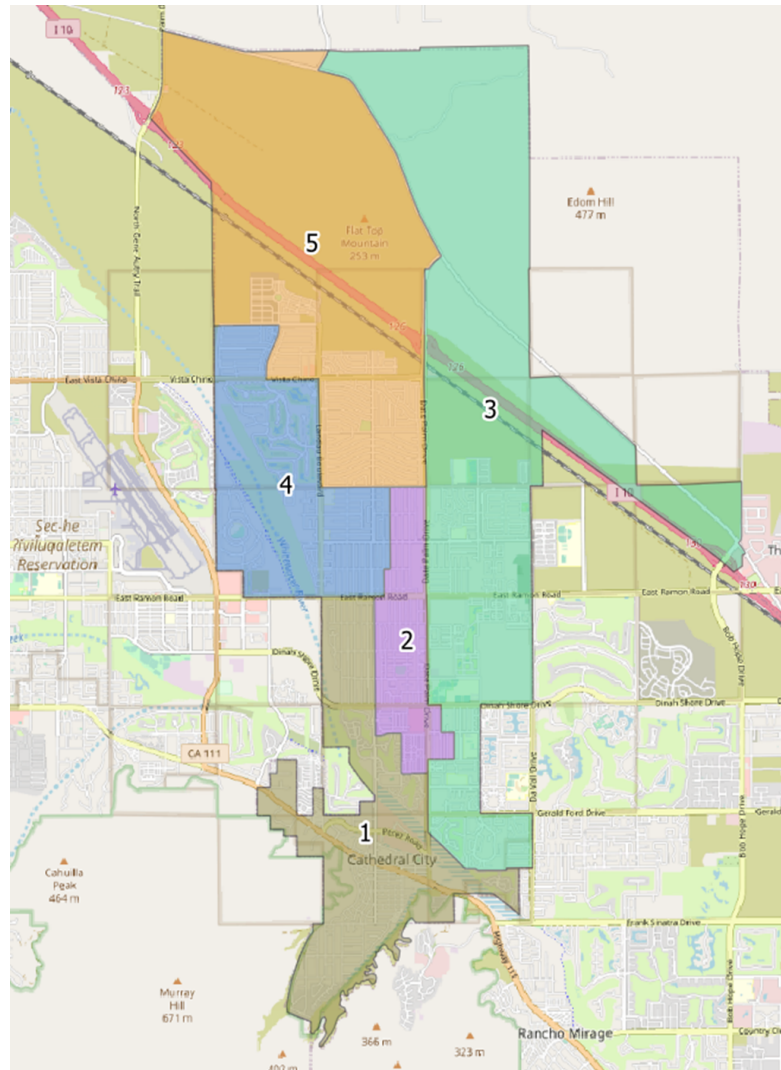


# Draft Maps

- Two Maps presented at Public Hearing #2
- Two Maps presented at Public Hearing #3
- Three additional Maps (2 revisions and one new map) presented tonight



# Map Option Cv2



Housing Stats



# Map Option Cv2 Demographics

District	Total POP	Raw Dev.	% Dev.	Latino	CVAP 19 Total	CVAP 19 NL White	CVAP 19 NL Black	CVAP 19 NL Hispanic	CVAP1 9 Not Hispanic	CVAP1 9 NL AIAN	CVAP1 9 NL ASIAN	CVAP19 NL Hawaiian	CVAP19 NL Other
1	10,125	-212	-2.05%	6,152	6,541	3,290	128	2,961	3,558	2	55	-	41
2	9,902	-435	-4.20%	7,509	5,077	1,602	101	2,856	2,224	22	469	-	39
3	10,544	207	2.01%	4,939	6,912	3,987	245	2,108	4,809	38	399	14	12
4	10,757	420	4.07%	6,679	7,055	2,551	322	3,429	3,581	30	510	21	52
5	10,355	18	0.18%	5,721	7,631	3,342	224	3,139	4,522	131	669	30	20

Total Population: 51,683

Ideal District Population: 10,337

Total Deviation: **8.27%**

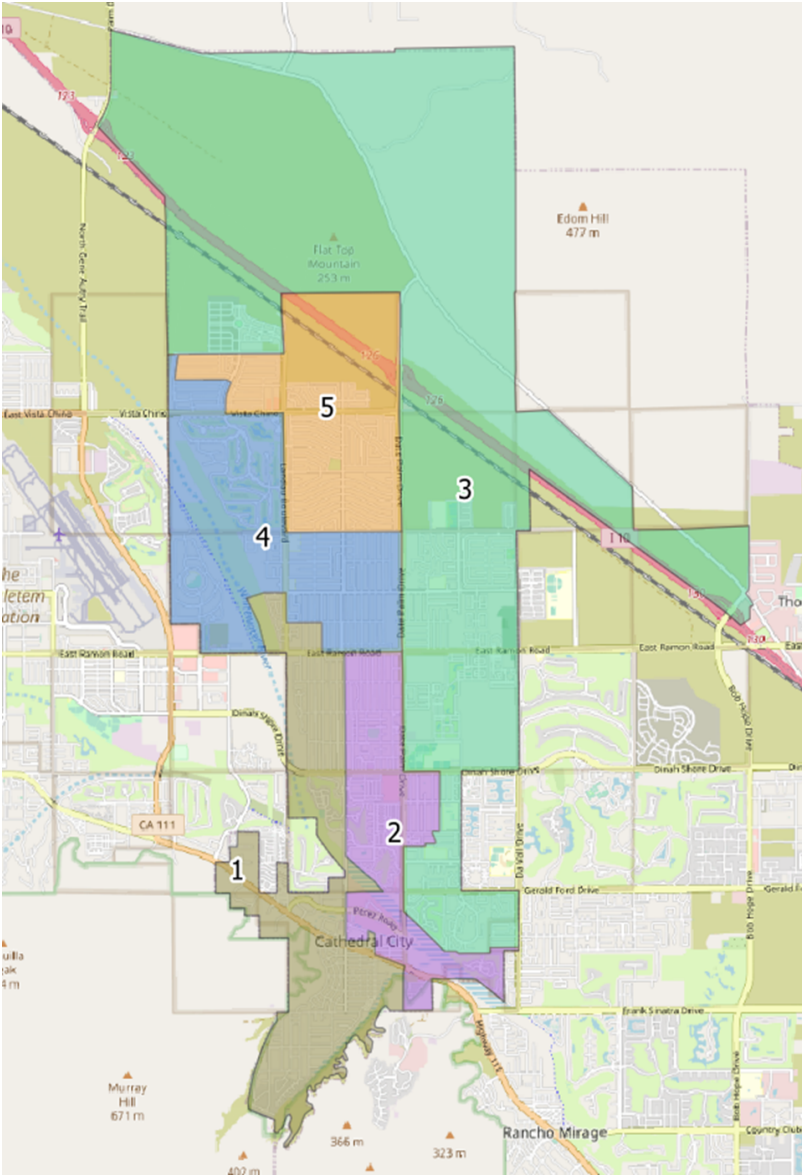


# Findings – Map Option Cv2

- Total Deviation is below the “acceptable” range at 8.27%
- Preserves majority/minority voting districts in Districts 2 & 4
- Revision to Option C
- Moves a small community of interest in the area bounded by Avenida Ximeno, Avenida Alvera, 30th Avenue, and Baristo Road, back into District 4.



# Map Option Dv4



Housing Stats

# Map Option Dv4 Demographics

District	Total POP	Raw Dev.	% Dev.	Latino	CVAP 19 Total	CVAP 19 NL White	CVAP 19 NL Black	CVAP 19 NL Hispanic	CVAP1 9 Not Hispanic	CVAP1 9 NL AIAN	CVAP1 9 NL ASIAN	CVAP19 NL Hawaiian	CVAP19 NL Other
1	10,223	-114	-1.10%	6,754	6,135	2,545	157	3,205	2,912	-	114	-	48
2	10,048	-289	-2.79%	6,902	5,496	2,557	103	2,484	3,028	24	304	2	11
3	10,003	-334	-3.23%	4,485	6,666	3,916	236	1,907	4,759	74	399	12	7
4	10,743	406	3.93%	6,919	7,025	2,313	297	3,627	3,380	15	611	21	78
5	10,666	329	3.19%	5,940	7,894	3,441	227	3,270	4,615	110	674	30	20

Total Population: 51,683

Ideal District Population: 10,337

Total Deviation: **7.16%**

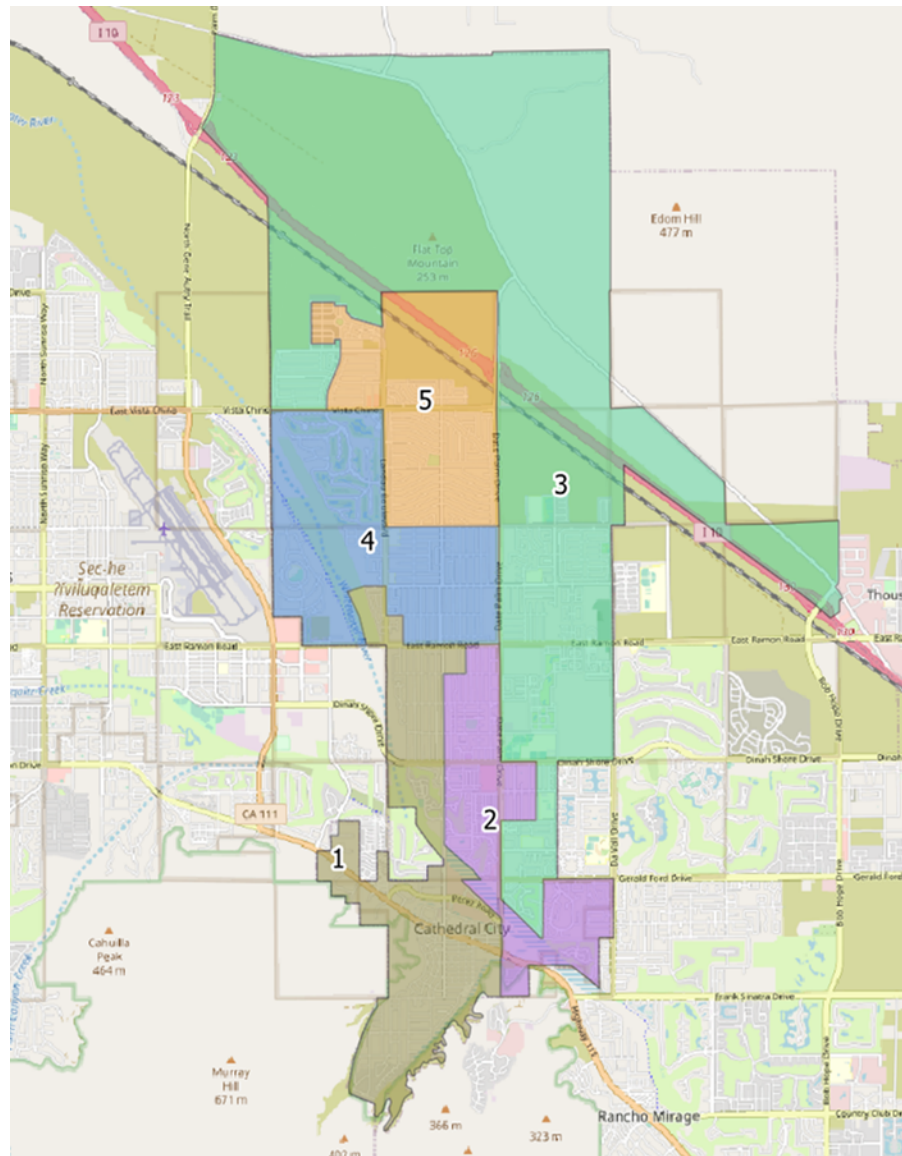


# Findings – Map Option Dv4

- Total Deviation is below the “acceptable” range at 7.16%
- Revision to Option D
- Preserves majority/minority voting districts in Districts 1 & 4
- Moves a small community of interest in the area bounded by Rango Road, Ventura Drive, Quijo Road, and Abril Road back to District 4, and picks up a small area north of Interstate 10 into District 5



# Map Option E



Housing Stats

# Map Option E Demographics

District	Total POP	Raw Dev.	% Dev.	Latino	CVAP 19 Total	CVAP 19 NL White	CVAP 19 NL Black	CVAP 19 NL Hispanic	CVAP1 9 Not Hispanic	CVAP1 9 NL AIAN	CVAP1 9 NL ASIAN	CVAP19 NL Hawaiian	CVAP19 NL Other
1	10,244	-93	-0.90%	6,797	6,050	2,604	155	3,110	2,933	-	91	-	37
2	10,328	-9	-0.08%	6,556	5,951	3,073	94	2,385	3,559	29	304	14	6
3	10,393	56	0.55%	5,098	6,886	3,715	284	2,205	4,641	63	436	-	12
4	10,385	48	0.47%	6,838	6,711	2,045	270	3,657	3,051	-	602	21	89
5	10,333	-4	-0.03%	5,711	7,618	3,335	217	3,136	4,510	131	669	30	20

Total Population: 51,683

Ideal District Population: 10,337

Total Deviation: 1.44%



# Findings – Map Option E

- Total Deviation is below the “acceptable” range at 1.44%
- Retains cores of existing districts
- Preserves majority/minority voting districts in Districts 1 & 4
- Submitted by a member of the public





# Public Hearing & Discussion

- Review Draft Maps
- Receive public input
- Select a preferred map, or, provide direction for revisions, or both
- Introduce Ordinance approving final map



# Timeline & Next Steps

- Introduce the Ordinance approving the final map
- Alternatively, hold an additional public hearing.
- The approved map must be submitted to the County Registrar of Voters no later than April 17, 2022.

